

Citizens Advice Local Authority Dashboard 2016

Calderdale



Citizens Advice Service England and Wales 2015/16:

	2015/16
Unique clients advised	1.95m
Problems dealt with	5.6m
Community locations	>2600

Calderdale in 2015/16

Citizens Advice Bureaux dealt with:

	2015/16
Clients	6,245
Problems	22,644

The main problem areas were:

	2015/16	
	Problems	%
Benefits	10,989	49%
Debt	5,541	24%
Employment	1,364	6%
Housing	1,030	5%

The top 5 benefit issues were:

	2015/16	
	Problems	%
Personal independence payment	2,290	21%
Employment Support Allowance	1,969	18%
Housing Benefit	1,252	11%
Working & Child Tax Credits	1,152	10%
Council tax reduction	833	8%

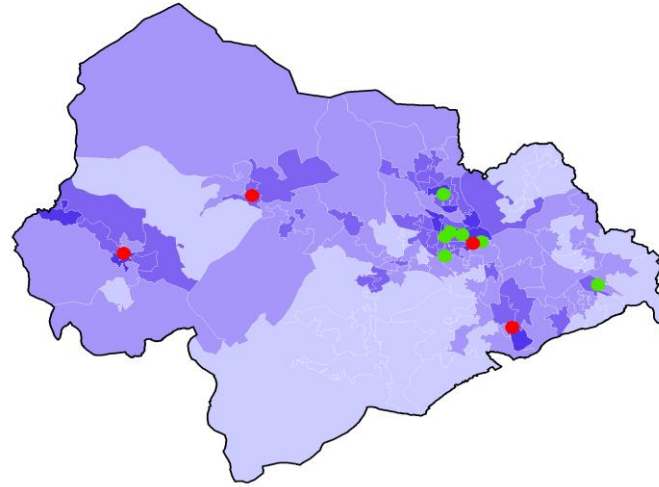
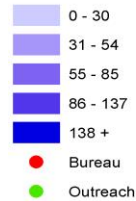
The top 5 debt issues were:

	2015/16	
	Problems	%
Council tax, comm. chg arrears	916	17%
Credit, store+chg card debts	483	9%
Unsecd personal loan debts	466	8%
Fuel debts	332	6%
Rent arrears-hsg assocs	324	6%

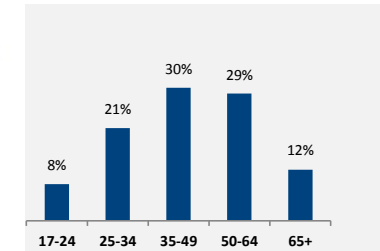
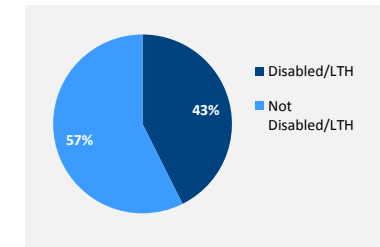
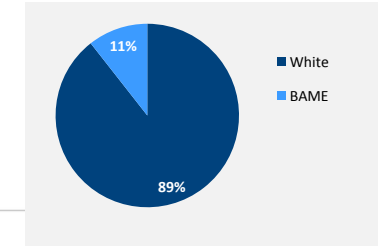
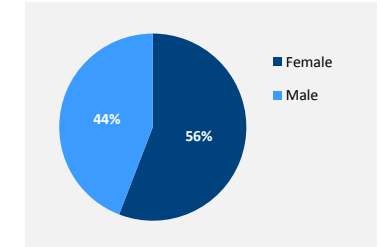
Key housing issues:

	2015/16	
	Problems	%
Actual homelessness	33	2%
Threatened homelessness	54	4%

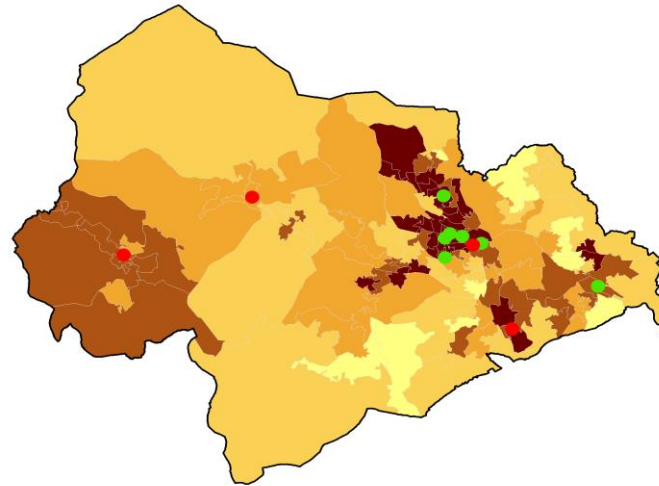
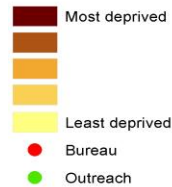
Clients



Client Profile:



English Deprivation Rank



Source: IMD 2015. Contains OS data © Crown copyright and database right 2016