



# IoD 2019: Living environment deprivation domain

The Living environment deprivation domain measures the quality of the local environment. The indicators fall into two sub-domains. The 'indoors' living environment measures the quality of housing; while the 'outdoors' living environment contains measures of air quality and road traffic accidents. This table summarises the number of neighbourhoods called LSOAs in Calderdale that are within 30% most deprived in England for this domain. There are 32,844 LSOAs in England, and 128 in Calderdale.

Ward	Number of LSOAs			Total
	10% Most Deprived	>10% - 20% Most Deprived	>20% - 30% Most Deprived	
Brighouse	3	0	1	7
Calder	7	1	0	8
Elland	3	1	1	8
Greetland and Stainland	2	1	1	7
Hipperholme and Lightcliffe	1	1	2	7
Illingworth and Mixenden	0	0	1	9
Luddendenfoot	4	1	0	7
Northowram and Shelf	1	2	0	7
Ovenden	2	1	1	8
Park	8	1	0	10
Rastrick	0	2	2	7
Ryburn	2	0	2	6
Skircoat	2	3	1	7
Sowerby Bridge	3	1	2	7
Todmorden	5	1	2	8
Town	4	2	2	8
Warley	1	2	1	7
<b>Calderdale</b>	<b>48</b>	<b>20</b>	<b>19</b>	<b>128</b>

## Measures

### Indoors Living Environment

- Housing in poor condition
- Houses without central heating

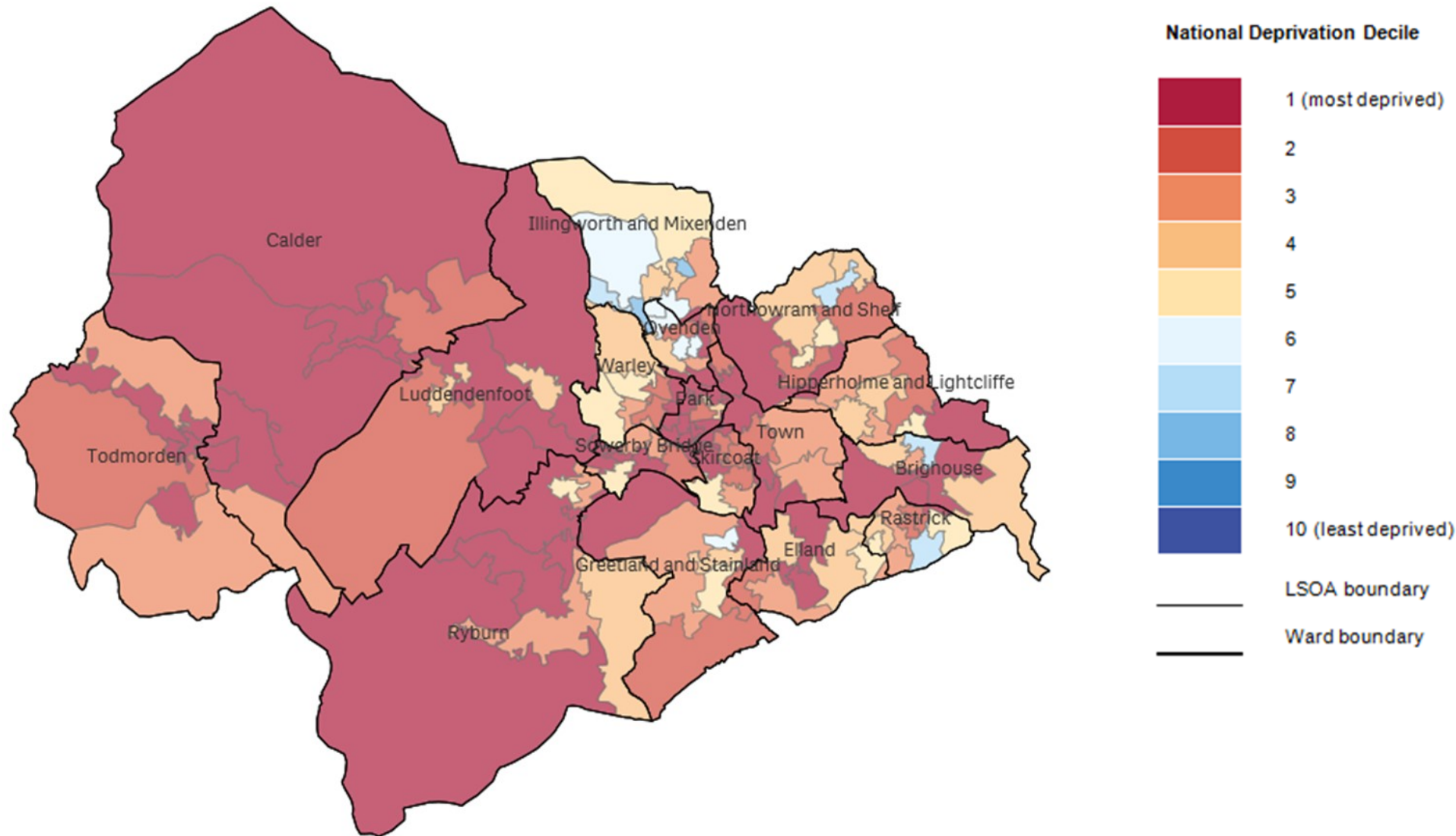
Sources: 2015 English Housing Survey, ONS Census 2011

### Outdoors Living Environment

- Air quality
- Road traffic accidents

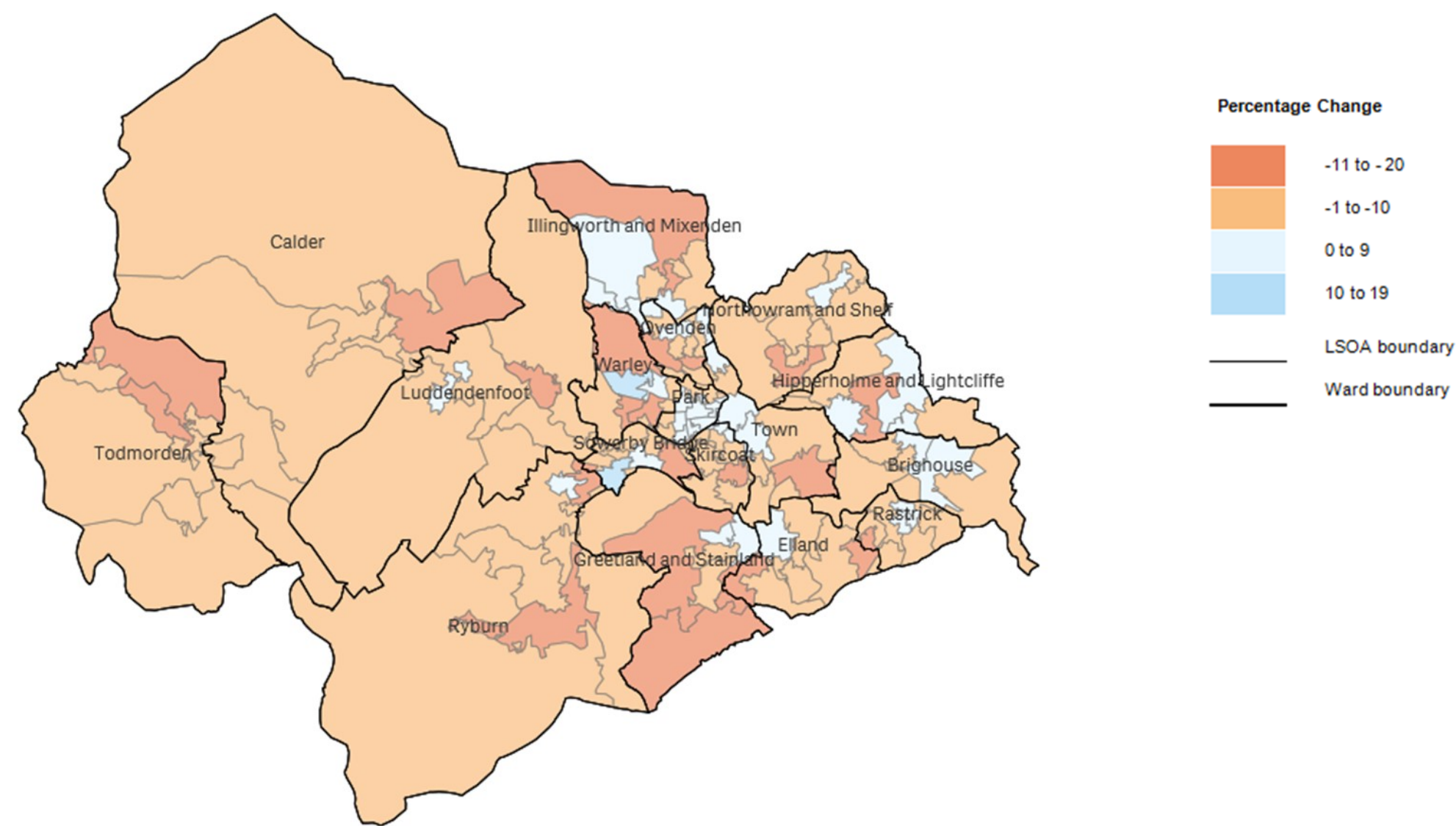
Sources: UK Air Information Resource 2016; DfT 2015-2017; ONS Census 2011  
ONS annual population estimates 2015 - 2017

# IoD 2019: Living environment deprivation domain: Calderdale



Data source: MHCLG English Indices of Deprivation 2019;©Qlik, ONS Geoportal and OpenStreetMap contributors

IoD 2019: Living environment deprivation domain: Calderdale: change in percentage rank 2015 to 2019



Data source: MHCLG English Indices of Deprivation 2019; ©Qlik, ONS Geoportal and OpenStreetMap contributors

# IoD 2019: Living environment: Indoor sub-domain

This sub-domain measures the measures the quality of housing. It is one of two sub-domains within the Living environment deprivation domain. This table summarises the number of neighbourhoods called LSOAs in Calderdale that are within 30% most deprived in England for this sub-domain. There are 32,844 LSOAs in England, and 128 in Calderdale.

Ward	Number of LSOAs			Total
	10% Most Deprived	>10% - 20% Most Deprived	>20% - 30% Most Deprived	
Brighouse	3	1	1	7
Calder	7	1	0	8
Elland	4	0	1	8
Greetland and Stainland	3	1	1	7
Hipperholme and Lightcliffe	1	3	2	7
Illingworth and Mixenden	0	1	2	9
Luddendenfoot	5	0	2	7
Northowram and Shelf	1	2	3	7
Ovenden	2	1	2	8
Park	8	1	0	10
Rastrick	0	2	3	7
Ryburn	2	3	0	6
Skircoat	3	3	0	7
Sowerby Bridge	4	2	1	7
Todmorden	6	2	0	8
Town	4	4	0	8
Warley	3	1	2	7
<b>Calderdale</b>	<b>56</b>	<b>28</b>	<b>20</b>	<b>128</b>

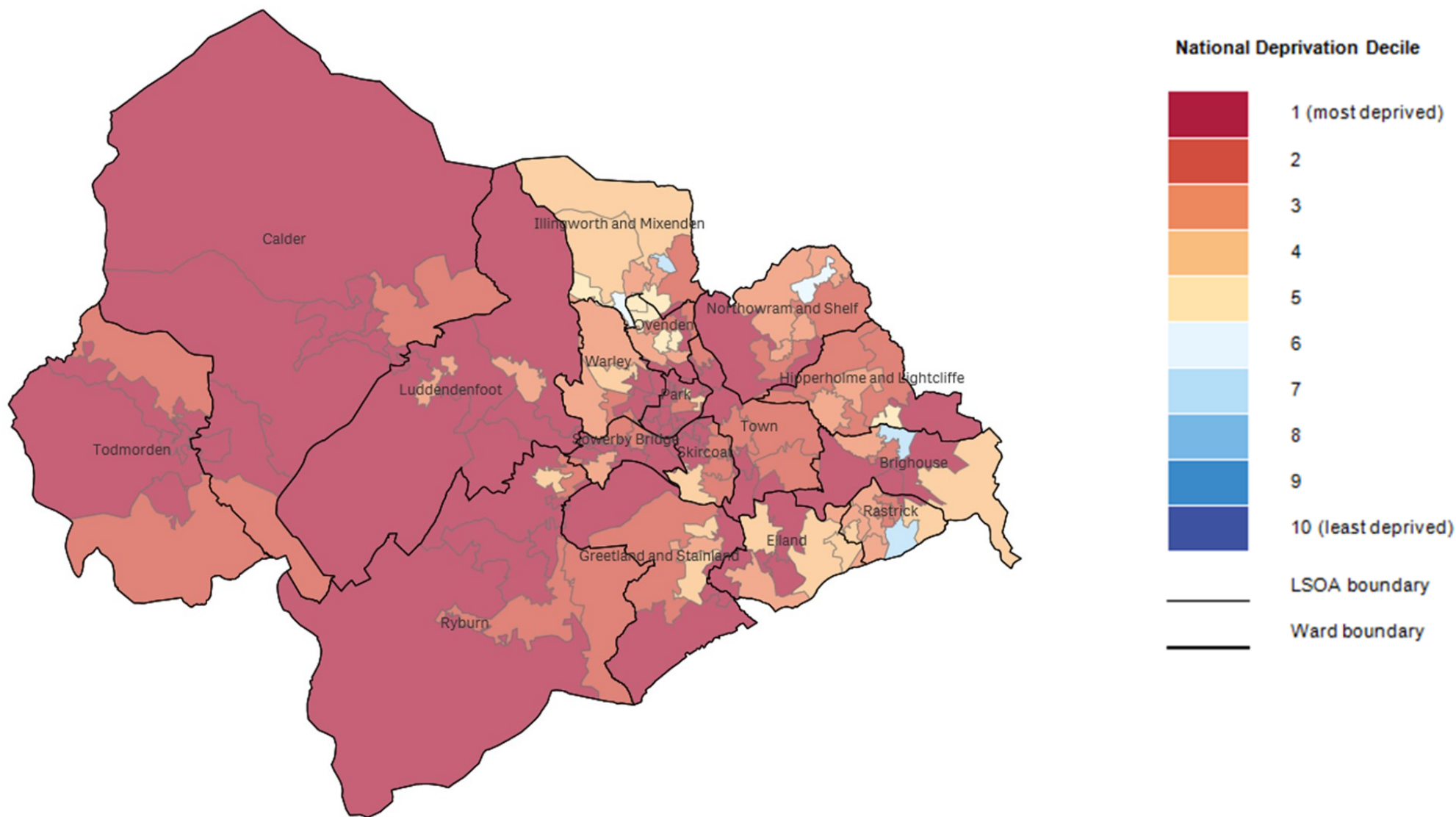
## Measures

### Indoors Living Environment

- Housing in poor condition
- Houses without central heating

Sources: 2015 English Housing Survey, ONS Census 2011

# IoD 2019: Living environment deprivation: Indoor sub-domain: Calderdale



Data source: MHCLG English Indices of Deprivation 2019; ©Qlik, ONS Geoportal and OpenStreetMap contributors

# IoD 2019 : Living environment: Outdoor sub-domain

This sub-domain measures of air quality and road traffic accidents. It is one of two sub-domains within the Living environment deprivation domain. This table summarises the number of neighbourhoods called LSOAs in Calderdale that are within 30% most deprived in England for this sub-domain. There are 32,844 LSOAs in England, and 128 in Calderdale.

Ward	Number of LSOAs			Total
	10% Most Deprived	>10% - 20% Most Deprived	>20% - 30% Most Deprived	
Brighouse			2	7
Calder				8
Elland			1	8
Greetland and Stainland				7
Hipperholme and Lightcliffe				7
Illingworth and Mixenden				9
Luddendenfoot				7
Northowram and Shelf				7
Ovenden				8
Park			1	10
Rastrick			1	7
Ryburn				6
Skircoat				7
Sowerby Bridge				7
Todmorden				8
Town			2	8
Warley				7
<b>Calderdale</b>			<b>7</b>	<b>128</b>

## Measures

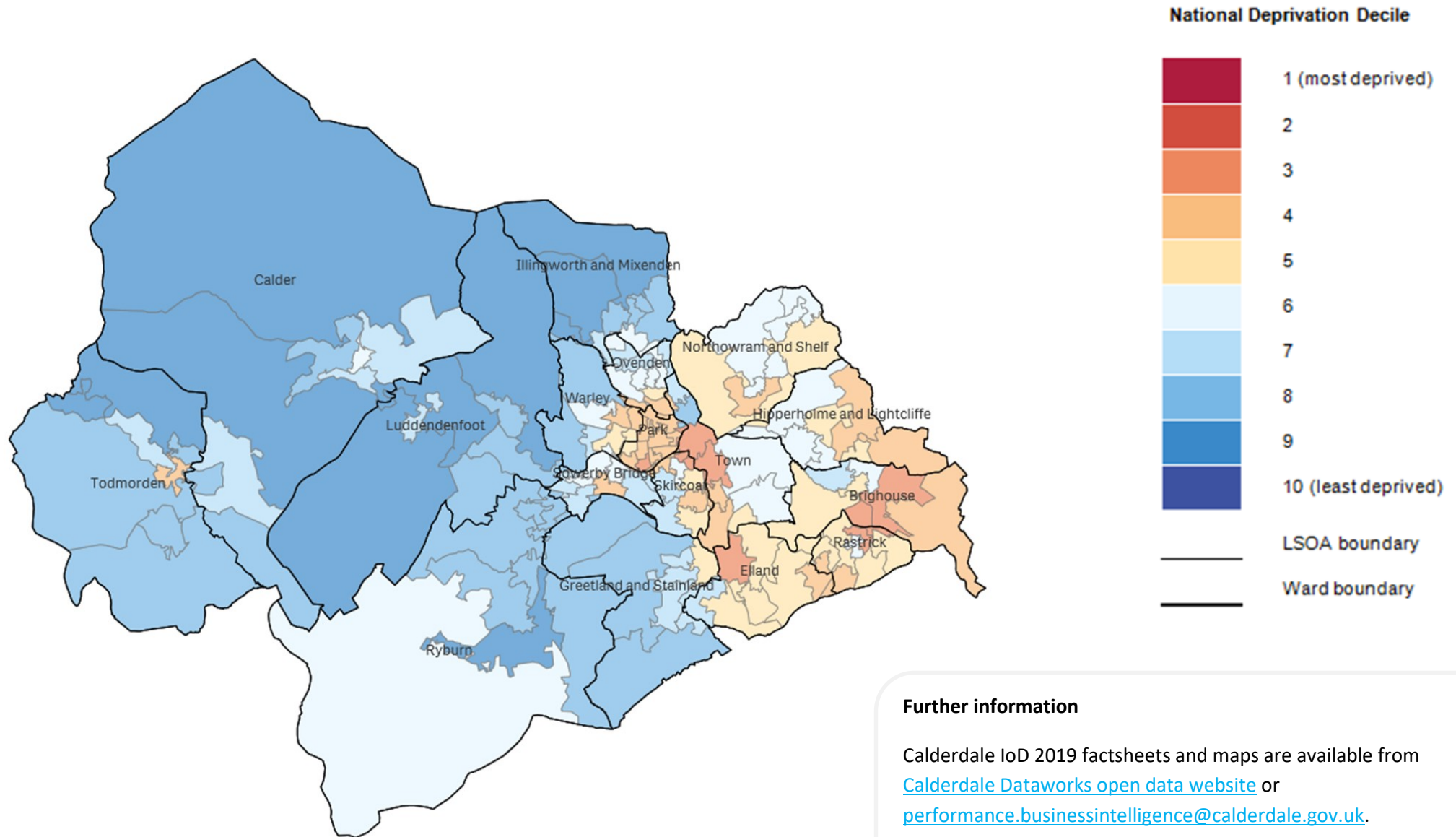
### Outdoors Living Environment

- Air quality
- Road traffic accidents

Sources: UK Air Information  
Resource 2016; DfT 2015-2017; ONS  
Census 2011  
ONS annual population estimates  
2015 - 2017



# IoD 2019: Living environment deprivation: Outdoor sub-domain: Calderdale



Data source: MHCLG English Indices of Deprivation 2019;©Qlik, ONS Geoportal and OpenStreetMap contributors