



# IoD 2019: Barriers to Housing and Services domain

This domain measures the physical and financial accessibility of housing and key local services. The indicators fall into two sub-domains: 'geographical barriers', which relate to the physical proximity of local services, and 'wider barriers' which includes issues relating to access to housing such as affordability. This table summarises the number of neighbourhoods called LSOAs in Calderdale that are within 30% most deprived in England for this domain. There are 32,844 LSOAs in England, and 128 in Calderdale.

Ward	Number of LSOAs			Total
	10% Most Deprived	>10% - 20% Most Deprived	>20% - 30% Most Deprived	
Brighouse				7
Calder	1		1	8
Elland				8
Greetland and Stainland		1	1	7
Hipperholme and Lightcliffe				7
Illingworth and Mixenden				9
Luddendenfoot		1	1	7
Northowram and Shelf				7
Ovenden				8
Park				10
Rastrick				7
Ryburn		1	1	6
Skircoat				7
Sowerby Bridge				7
Todmorden			2	8
Town				8
Warley				7
<b>Calderdale</b>	<b>1</b>	<b>3</b>	<b>6</b>	<b>128</b>

## Measures

### Geographical Barriers

Road distance to: post office; primary school; general store / supermarket; GP surgery

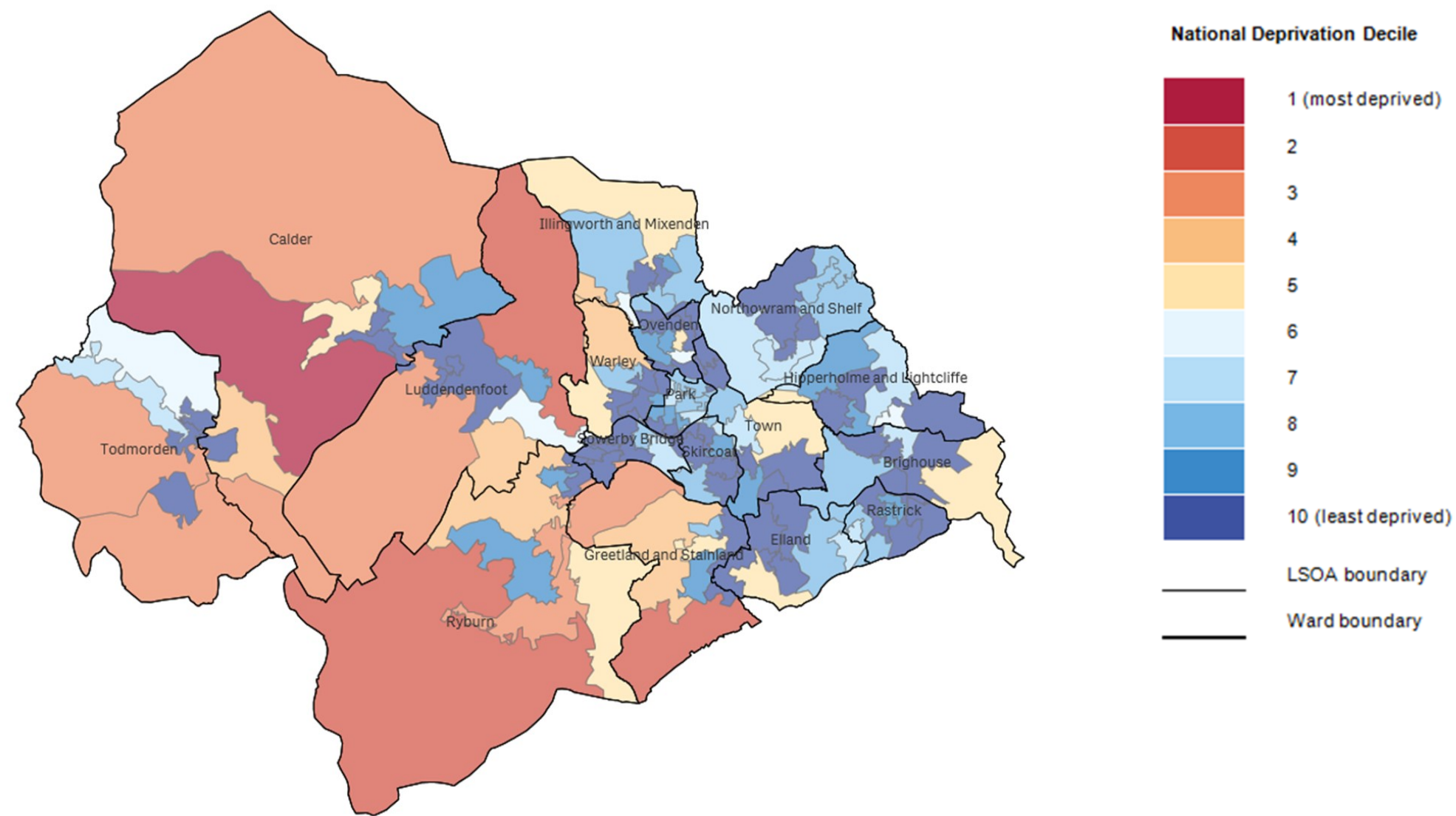
Sources: Post Office Ltd 2018; DoE Edubase Feb 2019; ONS Postcode Directory May 2018; Ordnance Survey MISO data set May 2018; NHS Digital GP premises postcodes 2019

### Wider barriers

- Household overcrowding
- Homelessness
- Housing affordability

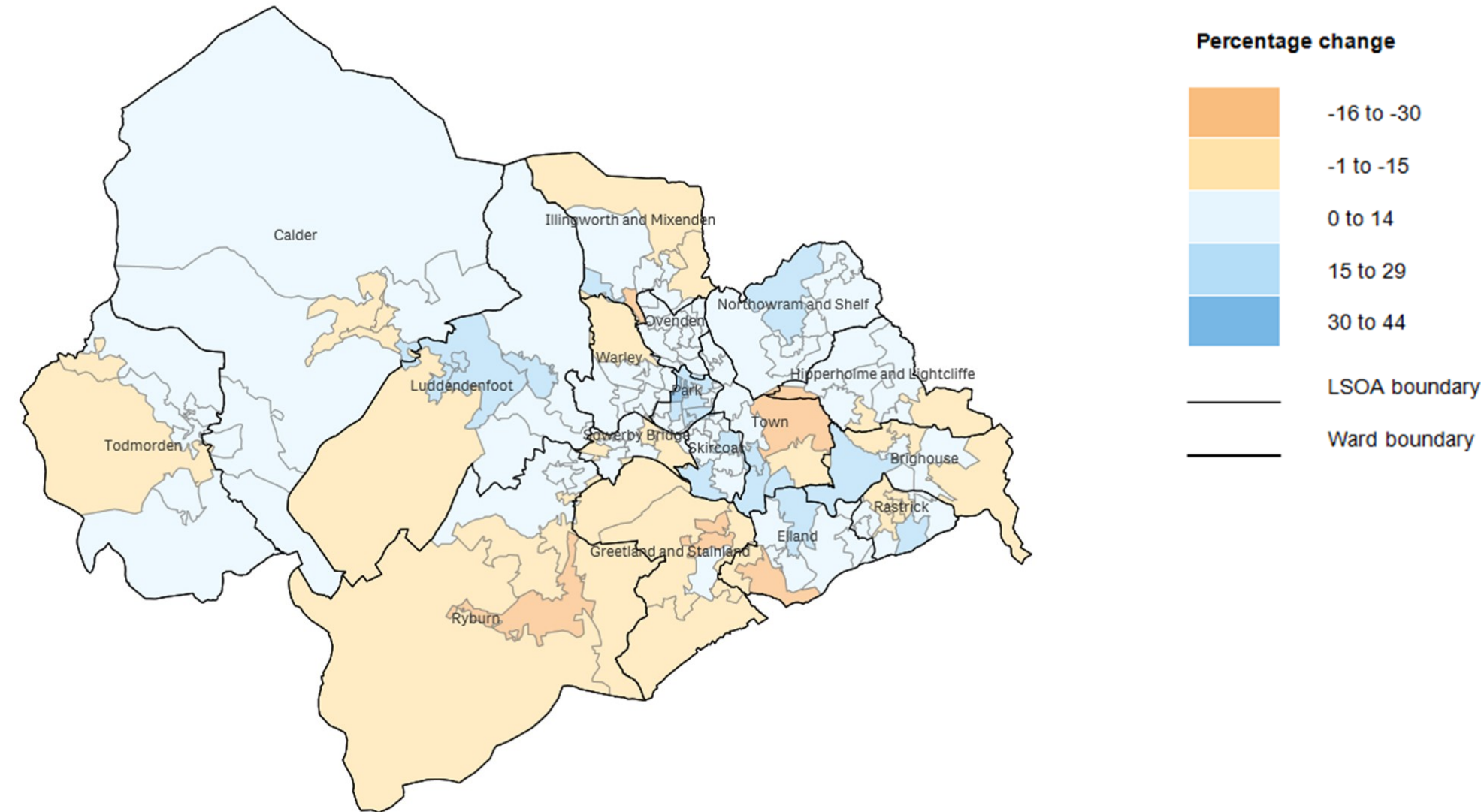
Sources: ONS Census 2011; DCLG Homelessness data 2015/16 and 2017/18; Family Resources survey, Land Registry, VAO, Regulated Mortgage Survey, Annual Population Survey, Annual Survey of Hours and Earnings ASHE.

# IoD 2019: Barriers to housing and services domain: Calderdale



Data source: MHCLG English Indices of Deprivation 2019;©Qlik, ONS Geoportal and OpenStreetMap contributors

# IoD 2019: Barriers to housing and services domain: Calderdale: change in percentage rank 2015 to 2019



Data source: MHCLG English Indices of Deprivation 2019;©Qlik, ONS Geoportal and OpenStreetMap contributors

# IoD 2019 : Geographical barriers sub-domain

This sub-domain measures the physical proximity of local services. It is one of two sub-domains within the Barriers to Housing and Services domain. This table summarises the number of neighbourhoods called LSOAs in Calderdale that are within 30% most deprived in England for this domain. There are 32,844 LSOAs in England, and 128 in Calderdale.

Ward	Number of LSOAs			Total
	10% Most Deprived	>10% - 20% Most Deprived	>20% - 30% Most Deprived	
Brighouse		1		7
Calder	2	2		8
Elland		1	1	8
Greetland and Stainland	2	2		7
Hipperholme and Lightcliffe			2	7
Illingworth and Mixenden		1	1	9
Luddendenfoot	2	1	1	7
Northowram and Shelf			2	7
Ovenden				8
Park				10
Rastrick				7
Ryburn	2	1		6
Skircoat				7
Sowerby Bridge			1	7
Todmorden	2		2	8
Town		1		8
Warley		2		7
<b>Calderdale</b>	<b>10</b>	<b>12</b>	<b>10</b>	<b>128</b>

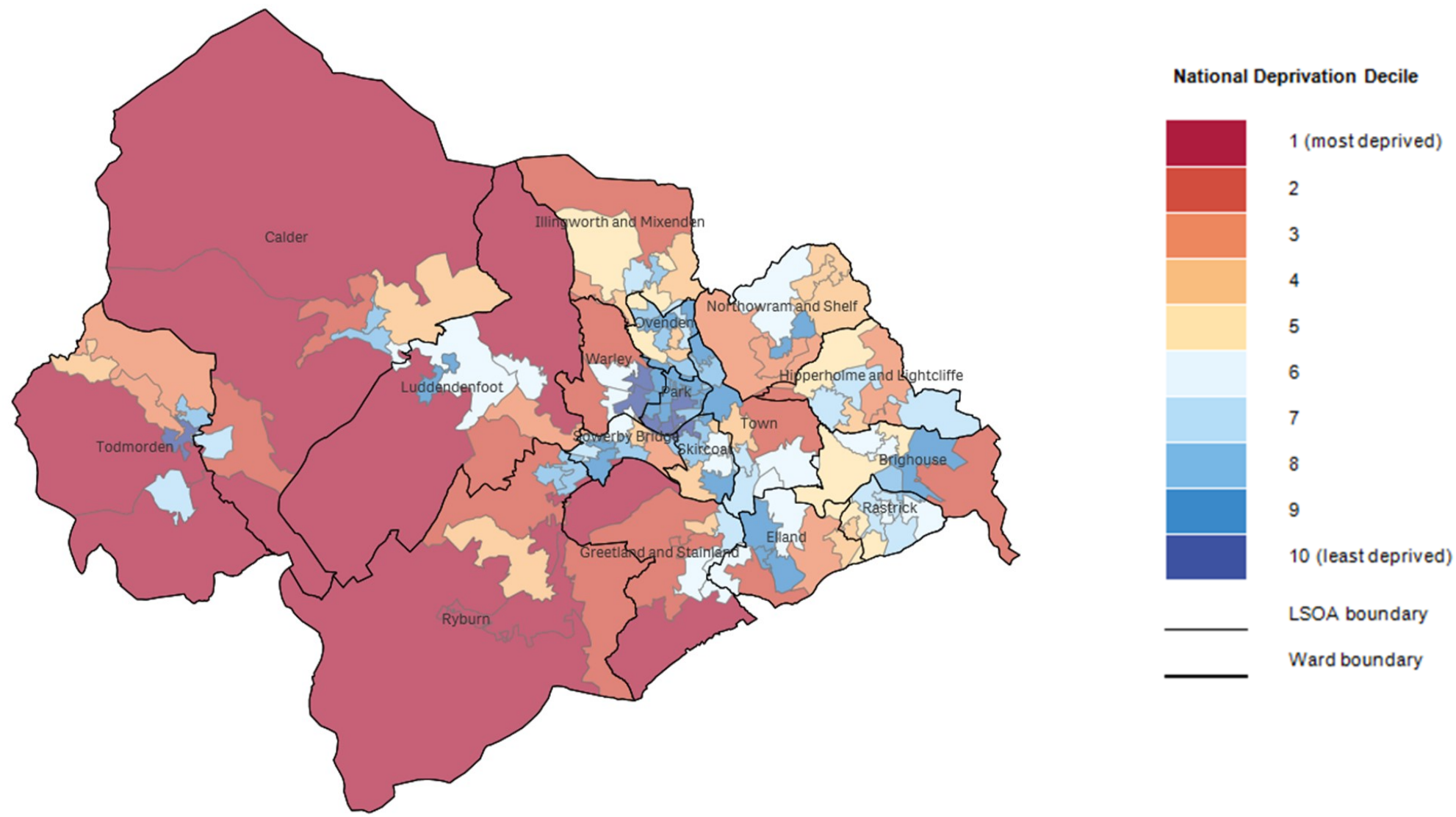
## Measures

### Geographical Barriers

Road distance to: post office; primary school; general store / supermarket; GP surgery

Sources: Post Office Ltd 2018; DoE Edubase Feb 2019; ONS Postcode Directory May 2018; Ordnance Survey MISO data set May 2018; NHS Digital GP premises postcodes 2019

# IoD 2019: Barriers to housing and services: Geographical barriers sub-domain: Calderdale



Data source: MHCLG English Indices of Deprivation 2019;©Qlik, ONS Geoportal and OpenStreetMap contributors

# IoD 2019 : Wider barriers sub-domain

This sub-domain measures the issues relating to access to housing such as affordability. It is one of two sub-domains within the Barriers to Housing and Services domain. This table summarises the number of neighbourhoods called LSOAs in Calderdale that are within 30% most deprived in England for this sub-domain. There are 32,844 LSOAs in England, and 128 in Calderdale.

Ward	Number of LSOAs			Total
	10% Most Deprived	>10% - 20% Most Deprived	>20% - 30% Most Deprived	
Brighouse				7
Calder				8
Elland				8
Greetland and Stainland				7
Hipperholme and Lightcliffe				7
Illingworth and Mixenden				9
Luddendenfoot				7
Northowram and Shelf				7
Ovenden				8
Park			1	10
Rastrick				7
Ryburn				6
Skircoat				7
Sowerby Bridge				7
Todmorden				8
Town				8
Warley				7
<b>Calderdale</b>	<b>0</b>	<b>0</b>	<b>1</b>	<b>128</b>

## Measures

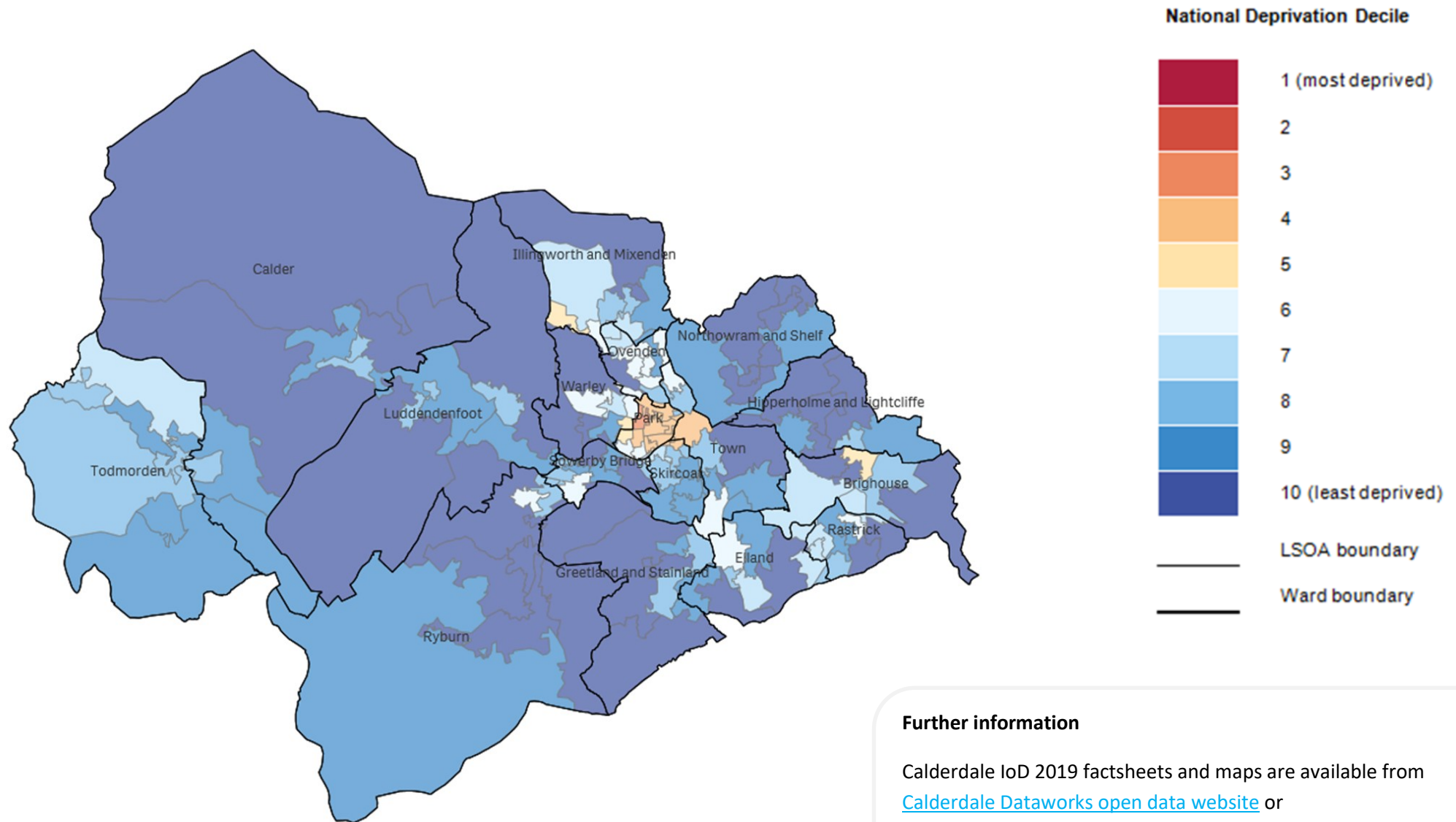
### Wider barriers

- Household overcrowding
- Homelessness
- Housing affordability

Sources: ONS Census 2011; DCLG Homelessness data 2015/16 and 2017/18; Family Resources survey, Land Registry, VAO, Regulated Mortgage Survey, Annual Population Survey, Annual Survey of Hours and Earnings ASHE.



## IoD 2019: Barriers to housing and services: Wider barriers sub-domain: Calderdale



### Further information

Calderdale IoD 2019 factsheets and maps are available from [Calderdale Dataworks open data website](#) or [performance.businessintelligence@calderdale.gov.uk](mailto:performance.businessintelligence@calderdale.gov.uk).

IoD 2019 results for England are available from the [Gov.uk](#) website.

Data source: MHCLG English Indices of Deprivation 2019;©Qlik, ONS Geoportal and OpenStreetMap contributors