



IoD 2019: Employment deprivation domain

The Employment Deprivation domain measures employment deprivation conceptualised as involuntary exclusion of the working age population from the world of work. People who would like to work but are unable to do so through unemployment, sickness or disability. This table summarises the number of neighbourhoods called LSOAs in Calderdale that are within 30% most deprived in England for this domain. There are 32,844 LSOAs in England, and 128 in Calderdale.

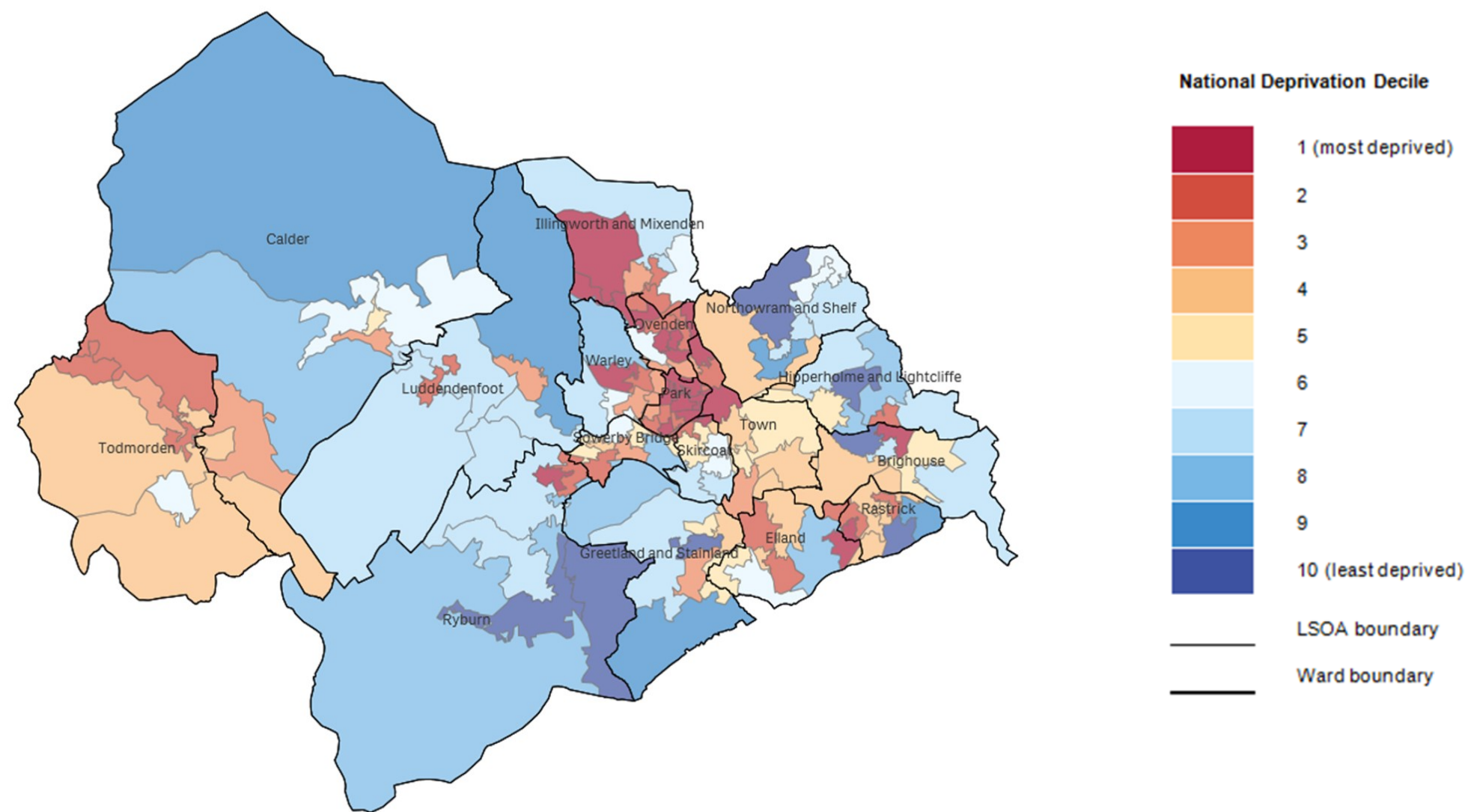
Ward	Number of LSOAs			Total
	10% Most Deprived	>10% - 20% Most Deprived	>20% - 30% Most Deprived	
Brighouse	1			7
Calder			2	8
Elland	1	2		8
Greetland and Stainland			1	7
Hipperholme and Lightcliffe		1		7
Illingworth and Mixenden	3	2	1	9
Luddendenfoot		1	1	7
Northowram and Shelf				7
Ovenden	4	2	1	8
Park	6	3	1	10
Rastrick		2		7
Ryburn	1	1		6
Skircoat		1		7
Sowerby Bridge		1	1	7
Todmorden		3	1	8
Town	2	1	1	8
Warley	1	1	2	7
Calderdale	19	21	12	128

Measures

- Claimants of Jobseeker's Allowance, aged 18-59/64
- Claimants of Employment and Support Allowance, aged 18-59/64
- Claimants of Incapacity Benefit, aged 18-59/64
- Claimants of Severe Disablement Allowance, aged 18-59/64
- Claimants of Carer's Allowance, aged 18-59/64

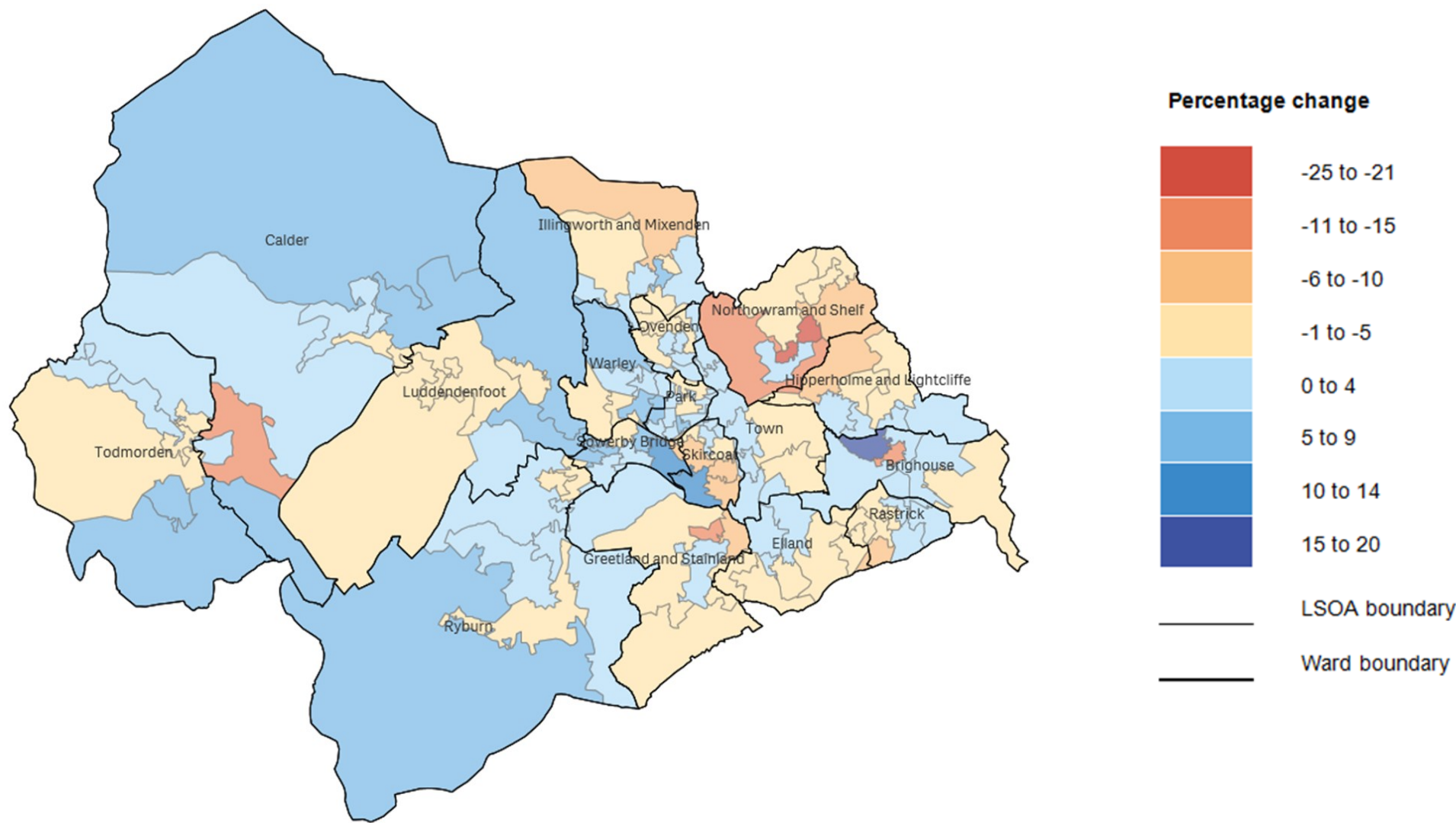
Source: DWP, 2015/16

IoD 2019: Employment deprivation domain: Calderdale



Data source: MHCLG English Indices of Deprivation 2019; ©Qlik, ONS Geoportal and OpenStreetMap contributors

IoD 2019: Employment domain: Calderdale: change in percentage rank 2015 to 2019



Data source: MHCLG English Indices of Deprivation 2019; ©Qlik, ONS Geoportal and OpenStreetMap contributors

IoD 2019 : Employment Deprivation Domain: Ward results

Ward	Total working age population*	% Employment deprived	Number Employment Deprived
Brighouse	6,616	9.90%	655
Calder	7,335	8.70%	638
Elland	7,146	10.80%	772
Greetland and Stainland	6,938	7.50%	520
Hipperholme and Lightcliffe	7,001	7.10%	497
Illingworth and Mixenden	7,370	15.80%	1,164
Luddendenfoot	6,287	8.30%	522
Northowram and Shelf	6,772	6.50%	440
Ovenden	7,799	18.70%	1,458
Park	9,678	21.00%	2,032
Rastrick	6,439	11.80%	760
Ryburn	6,926	7.90%	547
Skircoat	7,664	8.40%	644
Sowerby Bridge	7,354	10.40%	765
Todmorden	7,331	12.90%	946
Town	7,853	15.20%	1,194
Warley	7,651	12.40%	949
Calderdale	124,160	11.80%	14,651

* IoD 2019 Population sourced from ONS 2015 Mid-year population estimates. Working age population defined as aged 16 to 64 males / 59 females.

Further information

Calderdale IoD 2019 factsheets and maps are available from [Calderdale Dataworks open data website](#) or performance.businessintelligence@calderdale.gov.uk. IoD 2019 results for England are available from the [Gov.uk](#) website.