



IoD 2025: Living environment deprivation domain

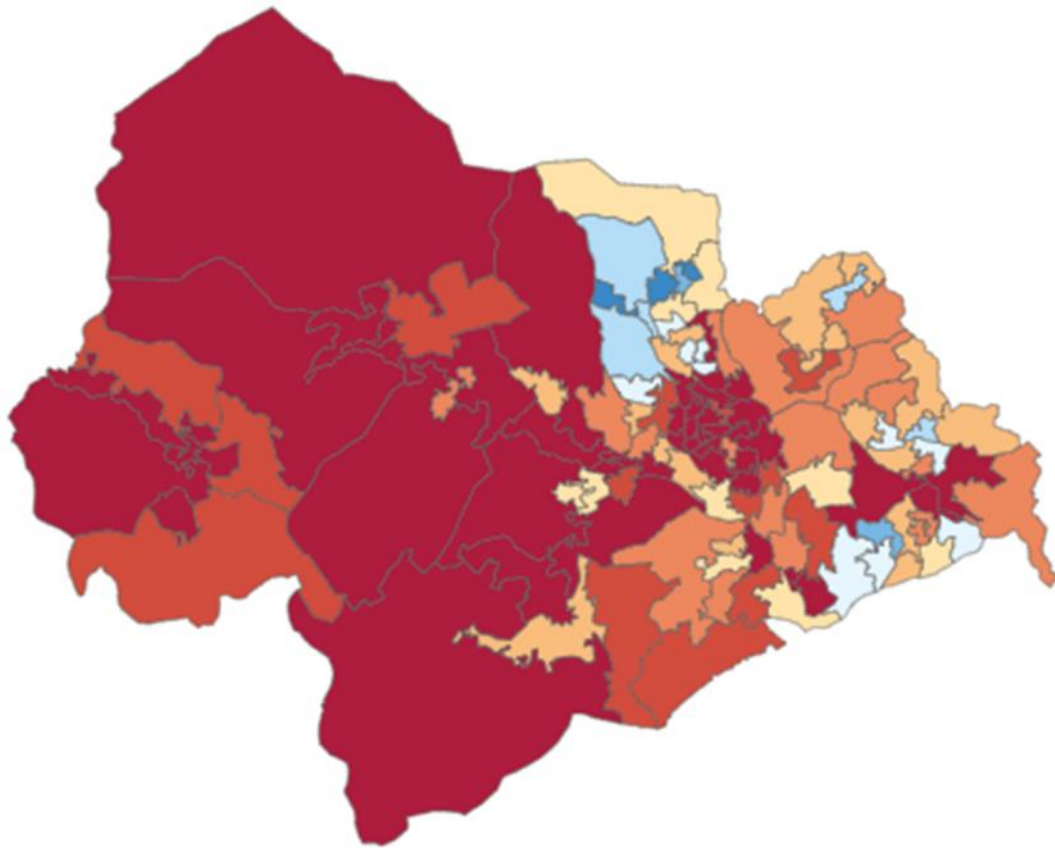
The Living Environment Deprivation Domain measures the quality of the local environment. The indicators fall into two sub-domains. The 'indoors' living environment measures the quality of housing; while the 'outdoors' living environment contains measures of air quality and road traffic accidents. This table summarises the number of neighbourhoods in Calderdale that are within 30% most deprived in England for this domain.

Ward	Number of LSOAs			Total number of LSOAs
	10% Most Deprived	>10% - 20% Most Deprived	>20% - 30% Most Deprived	
Brighouse	3		2	7
Calder	6	2		8
Elland	2	2	1	7
Greetland and Stainland	2	1	2	7
Hipperholme and Lightcliffe			2	7
Illingworth and Mixenden				8
Luddendenfoot	4		1	6
Northowram and Shelf		1	2	7
Ovenden	2			9
Park	9	1		10
Rastrick			2	8
Ryburn	3	1		7
Skircoat	5	1	1	8
Sowerby Bridge	3	1	1	7
Todmorden	6	2		8
Town	3	1	3	8
Warley	1	2	1	7
Calderdale	49	15	18	129

The English Indices of Deprivation (IoD) use LSOAs to report statistics for neighbourhood areas. LSOA is short for lower-layer super output area. LSOAs typically include populations about 1,600 people.

There are 33,755 LSOAs in England of which 129 are in Calderdale.

IoD 2025: Living environment deprivation domain: Calderdale



2025 map colour key

Decile	Deprivation level	No of LSOAs
1	10% most deprived	49
2	>10% to 20% most deprived	15
3	>20% to 30% most deprived	18
4	>30% to 40% most deprived	17
5	>40% to 50% most deprived	10
6	>40% to 50% least deprived	10
7	>30% to 40% least deprived	5
8	>20% to 30% least deprived	2
9	>10% to 20% least deprived	3
Total		129

Data source: MHCLG English Indices of Deprivation 2025

IoD 2025: Living environment: Indoor sub-domain

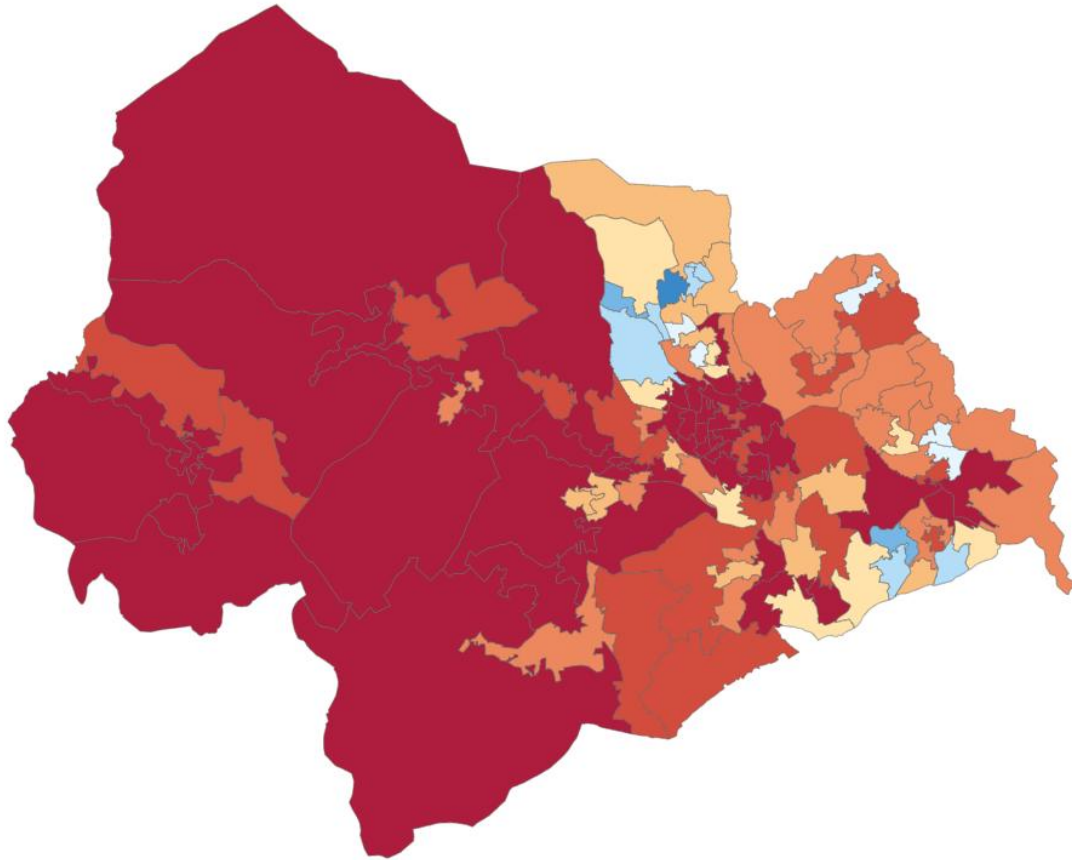
This sub-domain measures the quality of housing. It is one of two sub-domains within the Living Environment Deprivation Domain. This table summarises the number of neighbourhoods in Calderdale that are within 30% most deprived in England for this sub-domain.

Ward	Number of LSOAs			Total number of LSOAs
	10% Most Deprived	>10% - 20% Most Deprived	>20% - 30% Most Deprived	
Brighouse	3	1	2	7
Calder	6	2		8
Elland	3	1		7
Greetland and Stainland	2	2	2	7
Hipperholme and Lightcliffe			5	7
Illingworth and Mixenden				8
Luddendenfoot	4	1	1	6
Northowram and Shelf		2	4	7
Ovenden	2		1	9
Park	9	1		10
Rastrick		1	2	8
Ryburn	3	1	1	7
Skircoat	4	3		8
Sowerby Bridge	3	1	2	7
Todmorden	7	1		8
Town	3	2	2	8
Warley	3	1	1	7
Calderdale	52	20	23	129

The English Indices of Deprivation (IoD) use LSOAs to report statistics for neighbourhood areas. LSOA is short for lower-layer super output area. LSOAs typically include populations about 1,600 people.

There are 33,755 LSOAs in England of which 129 are in Calderdale.

IoD 2025: Living environment deprivation: Indoor sub-domain: Calderdale



Indoor subdomain colour key

Decile	Deprivation level	No of LSOAs
1	10% most deprived	52
2	>10% to 20% most deprived	20
3	>20% to 30% most deprived	23
4	>30% to 40% most deprived	11
5	>40% to 50% most deprived	9
6	>40% to 50% least deprived	5
7	>30% to 40% least deprived	6
8	>20% to 30% least deprived	2
9	>10% to 20% least deprived	1
Total		129

Data source: MHCLG English Indices of Deprivation 2025

IoD 2025 : Living environment: Outdoor sub-domain

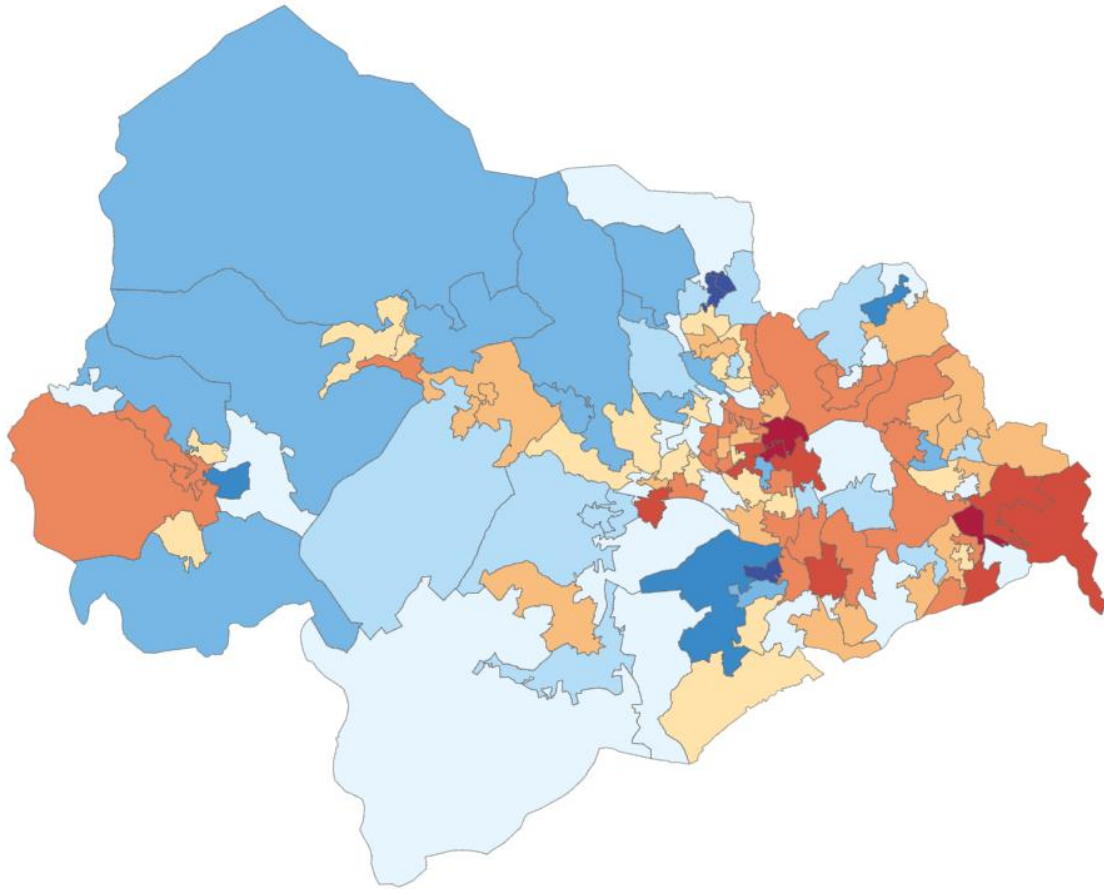
This sub-domain measures of air quality and road traffic accidents. It is one of two sub-domains within the Living Environment Deprivation Domain. This table summarises the number of neighbourhoods in Calderdale that are within 30% most deprived in England for this sub-domain.

Ward	Number of LSOAs			Total number of LSOAs
	10% Most Deprived	>10% - 20% Most Deprived	>20% - 30% Most Deprived	
Brighouse	1	2	1	7
Calder			1	8
Elland		1	1	7
Greetland and Stainland			1	7
Hipperholme and Lightcliffe			2	7
Illingworth and Mixenden				8
Luddendenfoot				6
Northowram and Shelf			2	7
Ovenden				9
Park		1	6	10
Rastrick		1	2	8
Ryburn				7
Skircoat	1	1	2	8
Sowerby Bridge		1	1	7
Todmorden			3	8
Town	1	1	2	8
Warley				7
Calderdale	3	8	24	129

The English Indices of Deprivation (IoD) use LSOAs to report statistics for neighbourhood areas. LSOA is short for lower-layer super output area. LSOAs typically include populations about 1,600 people.

There are 33,755 LSOAs in England of which 129 are in Calderdale.

IoD 2025: Living environment deprivation: Outdoor sub-domain: Calderdale



Outdoor subdomain colour key

Decile	Deprivation level	No of LSOAs
1	10% most deprived	3
2	>10% to 20% most deprived	8
3	>20% to 30% most deprived	24
4	>30% to 40% most deprived	19
5	>40% to 50% most deprived	20
6	>40% to 50% least deprived	21
7	>30% to 40% least deprived	14
8	>20% to 30% least deprived	14
9	>10% to 20% least deprived	3
10	10% least deprived	3
Total		129

Data source: MHCLG English Indices of Deprivation 2025

IoD 2025: Living environment deprivation domain Measures

Indoors

- Housing in poor condition: The proportion of social and private homes that fail to meet three components of the Decent Homes standard. English Housing Survey 2019/20, Experian dwelling-level data 2023 and 2023 Ordnance Survey geographic dwelling level data
- Housing Energy Performance Score: A measure reflecting housing quality derived from the Energy Performance Certificate (EPC) data collated by MHCLG. EP open data from 2012 to 2024, as published in December 2024
- Housing lacking private outdoor space: Data derived from Ordnance Survey (OS) and Office for National Statistics (ONS) data on residential properties and associated private outdoor space. ONS mid 2023

Outdoors

- Air quality: A measure of air quality based on emissions rates for four pollutants. DEFRA, 2023
- Road traffic accidents involving injury to pedestrians and cyclists: A measure reflecting the rate of pedestrians and cyclist casualties from road traffic collisions. DfT open data on traffic accidents 2019 to 2023; Census 2011 and Census 2021 workplace population data, ONS Annual population estimates 2022
- Noise pollution: The percentage of the population of each LSOA exposed to noise pollution greater than or equal to 55dB Lden. DEFRA, 2021

Further information English Indices of Deprivation (IoD) 2025 complete results are available from the [Gov.uk](https://www.gov.uk) website. Calderdale IoD 2025 factsheets and maps are available from [Calderdale Dataworks open data website](#), and performance.businessintelligence@calderdale.gov.uk.