



## **Corporate Performance Report Q1 2024/25**

## Summary

This report provides a performance update for Quarter 1 2024/25 reporting year.

During this reporting period, there have been data releases for the following Super Key Performance Indicators (SKPIs):

- **[Physical Activity](#)** — Data published this year, covering the 12 months to November 2023, shows an increase in the proportion of the Calderdale adult population that are physically active. Performance improved from 64% to 67%, placing us top against statistical neighbours and remaining above the national and regional average.
- **Claimant Count** — The latest data release (June 2024) shows 5,800 people claiming unemployment related benefits, equating to 4.6% of residents (aged 16-64). The number of claimants has been increasing quarter on quarter since Quarter 2 2023/24. Regional and national comparators have seen a similar trend, although we have a proportion of claimants that comparators (4.4% and 4.1% respectively).
- **Youth Unemployment** — As at June 2024, 7.5% (1,070) of 18-24 year olds are claiming unemployment benefits. This is a decrease for the third quarter with the number of claimants figures more in line with the same reporting period the previous year when the data reported figures of 1,060 and proportion of 7.4%. However, Calderdale remains higher than regional and national comparators (6% and 5.2% respectively).
- **[Domestic Abuse - Repeat Victims](#)** Domestic abuse repeat victims is a new Super Key Performance indicator for 2024/25. Domestic abuse incidents have reduced by 7.1% in comparison to the last 12 months to March 2024. The repeat victim rate has also reduced by 1.5% in the last 12 months to March, 2024

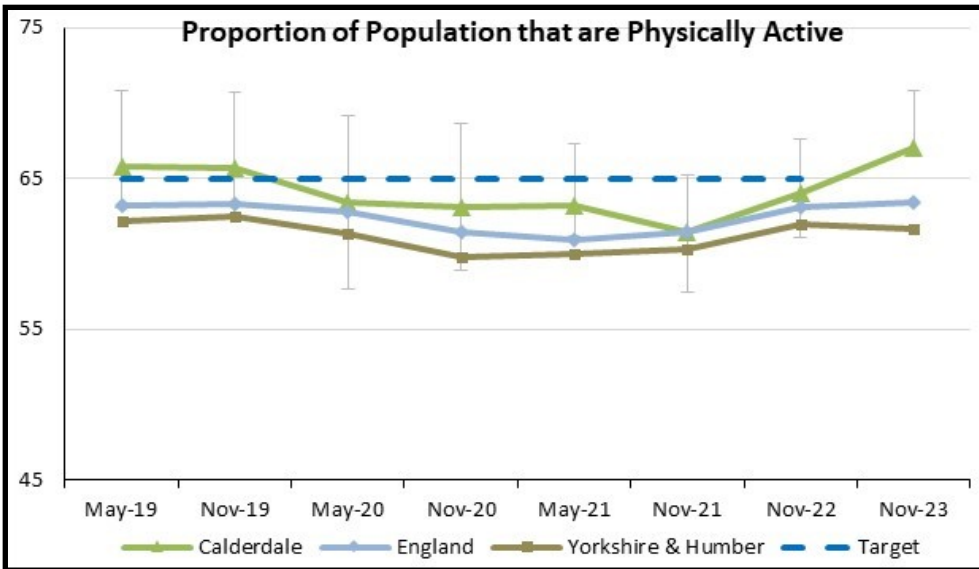
From the wider basket of Key Performance Indicators, please note the following exception reports:

[Primary Phase Attainment Outcomes](#)

[Special Guardianship Order](#)

Statistical Neighbour Ranking as of 15/05/24										
Priority	SKPI	What Does Good Performance Equal	Score - Latest Data Release	Period	Score - Previous Data Release	Period	Performance Trend	Latest Rank In Comparator Group	Comparator Group	Top 3 Performing Statistical Neighbours
Reducing Inequalities	Healthy life expectancy at birth (Males)	High	59	2018-20	61.4	2017-19	Worsening	11/16	CIPFA Nearest Neighbours	Stockport (65.1) Bury (63.4) Dudley (62.9)
	Healthy life expectancy at birth (Females)	High	63.4	2018-20	64	2017-19	Worsening	2/16	CIPFA Nearest Neighbours	Medway (63.6) Calderdale (63.4) Dudley (62.7)
	Percentage of physically active adults	High	67.0%	November 2022/23	64.0%	November 2021/22	Improving	1/16	CIPFA Nearest Neighbours	Calderdale (67%) Warrington (65.7%) Darlington (64.5%)
	Prevalence of Healthy Weight in Reception children	High	79.3%	2022/23	81.7%	2021/22	Worsening	1/11	DfE Statistical Neighbours	Calderdale (79.3%) Derbyshire (78.5%) Leeds (77.7%)
	Prevalence of Healthy Weight in Year 6 children	High	60.4%	2022/23	63.0%	2021/22	Worsening	8/11	DfE Statistical Neighbours	Derbyshire (64.1%) Nottinghamshire (62.1%) Lancashire (61.9%)
	Proportion of older people in receipt of long term adult social care (65+)	Low	3.65%	2022/23	3.6%	2021/22	Worsening	8/16	CIPFA Nearest Neighbours	North Lincolnshire (2.56%) Kirklees (2.64%) North Northamptonshire
	Percentage achieving a good level of development in the Foundation Stage Profile	High	65.4%	2022	70.5%	2019	Worsening (though improved)	4/11	DfE Statistical Neighbours	Stockton on Tees (68.1%) Nottinghamshire (66.8%) Darlington (66.0%)
	Domestic Abuse - Repeat Victims	Low	42.6%	In the 12 months to March 2024					Policing and Crime WYCA	Comparators available Q4 2024/25
	Serious Crime	Low	149	In the 12 months to March 2023	163	In the 12 months to March 2022	Improving		Policing and Crime WYCA	* Calderdale 0.93 West Yorkshire 0.93 England and Wales 0.63
	Neighbourhood Crime	Low	2581	In the 12 months to March 2023	2431	In the 12 months to March 2022	Worsening		Policing and Crime WYCA	*Calderdale 12.4 West Yorkshire 14.4 England and Wales 12.7
Voluntary organisations as a rate of population (per 100,000)	No Polarity	185.19	2020/21	187.6	2019/2020	Worsening (though maintained comparative position)	1/16	CIPFA Nearest Neighbours	Calderdale (185.19) Bury (182.12) Kirklees (174.91)	

Statistical Neighbour Ranking as of 15/05/24										
Priority	SKPI	What Does Good Performance Equal	Score - Latest Data Release	Period	Score - Previous Data Release	Period	Performance Trend	Latest Rank In Comparator Group	Comparator Group	Top 3 Performing Statistical Neighbours
Strong Thriving Towns and Places	RQF level 4+, aged 16 to 64	High	44.7	2023	40.7	2022	Improving	3/16	CIPFA Nearest Neighbours	Warrington (50.6%) Bury (47.1%) Calderdale (44.7%)
	Median gross weekly pay	High	621.5	2023	576.8	2022	Improving	9/16	CIPFA Nearest Neighbours	Warrington (694.5) Halton (664) St Helens (662.6)
	Claimant Count (*benchmarking uses the proportion rather than number)	Low	5800	Jun-24	5700	Mar-24	Plateaued	11/16	CIPFA Nearest Neighbours	Warrington (2.5%) North Northamptonshire (3.3%) Wakefield (3.6%)
	Youth unemployment	Low	7.5%	Jun-24	8.2%	Mar-24	Improving	10/16	CIPFA Nearest Neighbours	Warrington (4.4%) North Northamptonshire (5.7%) Telford & Wrekin (5.9%)
	Business Survival Rates (3 years)	High	55.3	2022	56.4	2021	Worsening (though improved)	10/16	CIPFA Nearest Neighbours	Darlington (64) North Lincolnshire (61.1) Tameside (57.5)
	Principal roads where maintenance should be considered	Low	3	2022/23	3	2021/22	Plateaued	6/15	CIPFA Nearest Neighbours	Stockton-on-Tees/Halton/ Darlington (1) Rotherham/Warrington (2)
	Housing delivery test % of deliverable assessed housing requirement delivery over a rolling 3 year period – over 75%	High	78%	2022	55%	2021	Improving	12/15	CIPFA Nearest Neighbours	Darlington (381%) Telford & Wrekin (264%) Doncaster (225%)
	Average Progress 8 score per pupil	High	-0.03	2023	-0.19	2022	Improving	4/11	DfE Statistical Neighbours	Leeds (0.12) Kirklees (0.11) Nottinghamshire (-0.01)
Climate Action	Local sites (both geological and wildlife) where positive conservation management is being or has been implemented in previous 5 years	High	80	2023-24	75	2022-23	Improving			
	Per capita CO2 emissions in the area	Low	4.2	2021	3.9	2020	Worsening (though improved comparative position)	8/16	CIPFA Nearest Neighbours	Medway (2.9) Dudley (3.3) Wigan/Stockport (3.7)



### What are we doing to improve?

As part of Active Calderdale’s Community Led Approach, Community Project Managers are working to empower communities to build capability and capacity, creating the conditions required for physical activity to be part of every day life.

Over the last 6 months, work has taken place to improve the following conditions across Park Ward, Rastrick, Mixenden, Illingworth, Ovenden, Lee Mount, Boothtown, Cornholme, Sowerby Bridge, Sowerby Village and Siddal:

- Safer, more accessible and more attractive parks and green spaces
- Safer, more accessible and more attractive streets and things to do and see
- More accessible, attractive and inclusive sport, physical activity and leisure opportunities
- The promotion of physical activity by local community assets

Informed by community insight, local groups, clubs and assets have been supported to create various new physical activity opportunities, 100+ new assets are engaged with Active Calderdale. Many have encouraged and supported people to be active and made changes to working practices. 15 new active champions have been recruited, 11 improvements made to parks/greenspaces, quarterly ‘We are Active Calderdale’ partnerships and regular parks and greenspaces partnership meetings have taken place, supporting system connectivity.

### What evidence is there that actions are having an impact?

1336 new attendees have regularly taken part in physical activity via sessions funded through Active Calderdale.  
 100 testimonies have been collected from participants evidencing improvements to physical and/or mental health.  
 Average of 10 assets are regularly attending ‘We are Active Calderdale’ partnerships per area.  
 Average of 8 assets are regularly attending parks partnership groups per area.

### What more needs to happen?

We will continue to work with assets in communities to enable them to support people to be physically active and continue to work with local people to develop people led initiatives, helping to build capacity and capability to support each other to be physically active.

**OPF feedback** We are extremely pleased with this latest performance and we are progressing our Active Calderdale work, using our place led approach and working across the system with communities, health and active travel partners (“Place Deepening”) to further embed our work to help our residents be more active and live happier healthier lives.

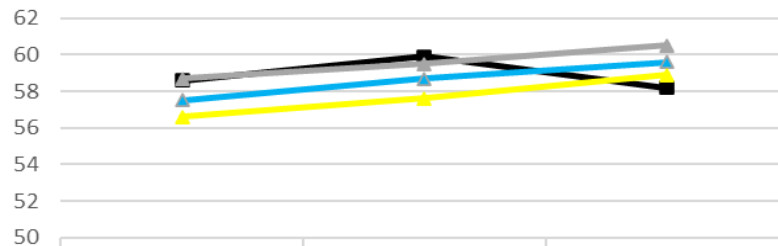
### What is the story the data is telling us?

This indicator is based on responses to the Sport England Active Lives Survey. The survey takes place every six months, with data collection taking place for a full year. Response rates can vary between different data collections  
 Between November 2017 and November 2018, the Calderdale rate for adults (16+) being physically active (150+ minutes of physical activity per week) was slightly above the 65% target, though not significantly. The rate decreased slightly in May 2019 and a further reduction was seen during November 2020, (falling to 61.4% from a peak of 66.4% in November 2017). Although the November 2021 data was not statistically significantly different from the previous release, or the baseline data, there was still a gradual reduction in ‘active’ levels. However, the most recently published data, for the year to November 2023, shows continuous improvement on the previous year. Whilst comparator averages remained static Calderdale’s rate of improvement locally was higher.

### Which CIPFA Statistical Neighbours perform best on this measure?

Calderdale had the highest ranking for adults undertaking 150+ minutes of physically activity per week, with 67% in the year to November 2023. Warrington is next at 65.7%, followed by Darlington at 64.5%.

% Expected Standard or Above in Reading, Writing and Maths at KS2



	2022	2023	2024
Calderdale	58.6	59.9	58.2
National	58.7	59.5	60.5
SN	57.5	58.7	59.6
Y&H	56.6	57.6	58.9

KPI36: At Key Stage 2, at the end of the primary phase, the proportion of children achieving the Expected Standard or above in all of Reading, Writing and Maths dipped from 59.9% in 2023 to 58.2% in 2024. The national, regional and Statistical Neighbour averages all rose slightly (e.g. the national average rose from 59.5% to 60.5%). Calderdale dipped from slightly above to slightly below all three comparator averages.

KPI 39: The proportion of children achieving a Good Level of Development at the end of Reception (aged five) continued a rising trend from 2022 and 2023, rising from 66.7% to 67.1%. The national average also rose by a slightly greater extent, from 67.2% to 67.8%, with Calderdale slightly below the national average. The SN average also rose from 65.2% to 65.7% and the regional average rose slightly from 66.2% to 66.3%. Calderdale was slightly above SN and regional averages.

KPI 111: The proportion of children working at the expected standard in the Yr. 1 Phonics assessment continued a rising trend from 2022 and 2023 and remains above the national average. The result for Calderdale rose from 80.6% to 82.%, a slightly larger increase than the national average which rose from 78.9% to 80.4%. The SN average also rose from 78.7% to 79.5% and the regional average from 79.5% to 80.9%, with Calderdale also above SN and regional averages as well as the national average.

It is important to note that all data is provisional at this stage and is likely to change in final validated figures.

### What are we doing to improve?

- We continue to oversee the Primary school clusters on the improvement areas identified. Addressing SEND needs is a priority for 24/25
- Assistant Director and Service Manager attend regular CPHA meetings
- We meet with DFE/OFSTED/ RD/CEOs and other stakeholders to keep up to date on the improvements being made in our schools
- Working with individual schools producing their own self assessment so we have a detailed analysis of individual schools data to determine their annual risk assessment
- School Effectiveness focused work on maintained schools causing concern

### What evidence is there that actions are having an impact?

- Ofsted outcomes—All good and Outstanding 23/24
- Attainment and Progress data. Phonics outcomes are a real success and are now back to 2019 outcomes. GLD continues to rise, with the impact of the work by the Starting Well Board and Family Hubs, particularly around the area of Speech, Language and Communication.
- Sharing of Good Practice
- Successful engagement of most schools with Research school, Maths and English hubs as well as our Teaching School Hub
- Continued increase in Good/outstanding schools 83% versus N 88%
- Significant numbers of teachers undertaking new NPQs programmes and passing the course requirements.

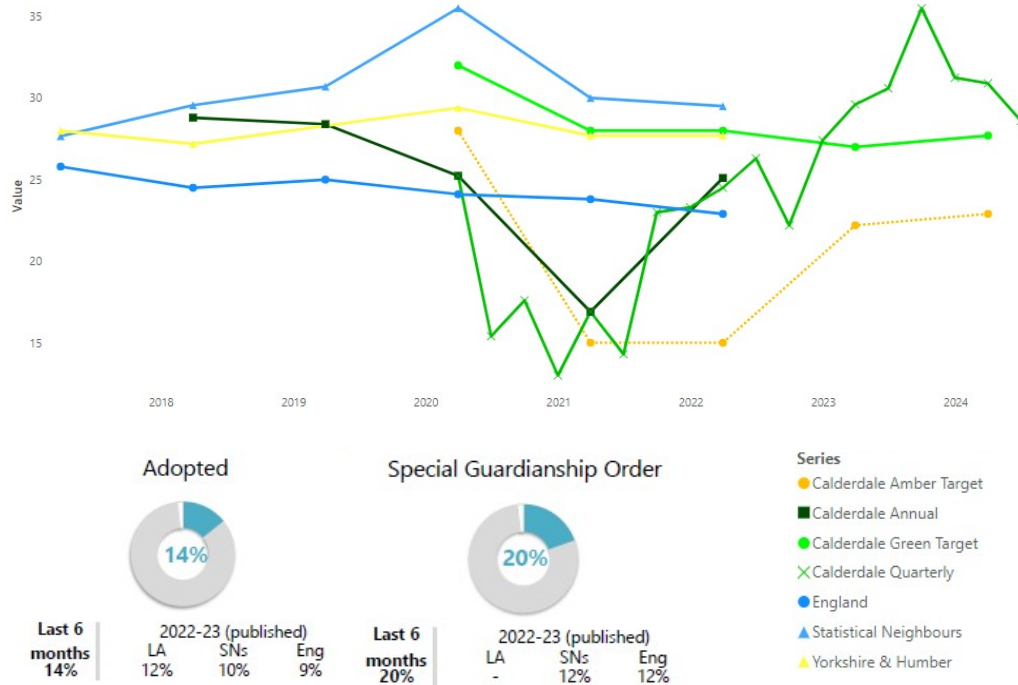
### What more needs to happen?

- Assistant Director and Service Manager continue to attend regular CPHA meetings
- Continued robust Quality assurance undertaken by Partnership Board members of school cluster plans 2024/2025
- Continued focus upon KS2 Writing at expected and greater depth standard alongside GPS
- Continued work with mainstream schools where there are increasing numbers of pupils with EHCPs to employ appropriate interventions/strategies, so all pupils make expected progress
- Significant numbers of staff continue to access CPD opportunities across all schools

**OPF feedback** This performance reflects a mixed picture for us. The EYFS data showing improvements in the readiness for our children to start school being made, set against the Key Stage 2 performance in the areas of reading, writing and maths. We are however committed to our system approach to supporting our schools with School Effectiveness to help further improvements be made.

# KPI 59: Children who cease to be looked after where the outcome reason is either 'Special Guardianship Order' or 'adopted' (%)

Q1



## What are we doing to improve?

Key to the high performance around these two metrics is the work undertaken within pre proceedings work (PLO). Early intervention supported by early permanence planning through exploring and understanding the contingency within the wider family allows for early planning in respect of adoption and importantly early assessment of extended family members allowing for family placements to be "tested" within court proceedings and the option for the court to make a SGO as an alternative to a Care Order. The monthly permanence tracker meeting also provides oversight, challenge and solutions to those children with a placement order to ensure we continue to improve the 'timeliness' of adoption.

## What evidence is there that actions are having an impact?

Evidenced in the performance data for adoption and SGO orders, alongside the adoption scorecard. The SGO support Team are seeing a significant increase in demand which is positive for the children and families as this means children have exited from being looked After by the Local Authority.

## What more needs to happen?

Awareness that family finding for adoption is increasingly challenging nationally which may become more difficult through the next year. We need to continue our present approach around PLO and ensure the continued focus with OAWY to adoption 'timeliness'. We need to ensure that we invest in the SGO service as a priority to address the increasing Demand and pressures on capacity. This will ensure that families are being provided with robust support and act as a preventative measure to ensure that carers who support children under SGO do not disrupt and then become open to statutory services again or LAC. This is being addressed through the sufficiency Strategy for 24/25.

**OPF feedback** A really good news story for us and for those individual concerned even more so. There still remains pressure on the lack of adopted families and the pressure on these families but overall our focus on permanence is bringing real impact on the lives of every single child.

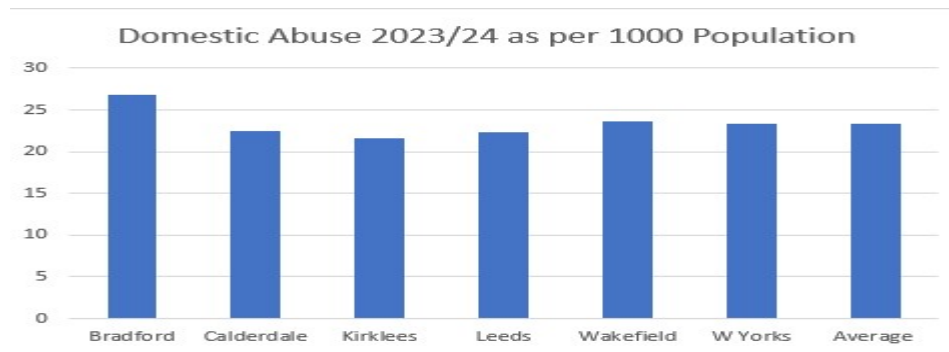
## What is the story the data is telling us?

In the first quarter of 2024/25, 28.6% of young people who ceased to be looked after were either adopted or had a Special Guardianship Order (SGO). Over the last six months (January to June), this figure increased to 34%. These percentages remain higher than both the statistical neighbours average (22%) and the national average (21%) for 2022/23.

Digging deeper, the data from performance reports reveals that 14% of those who ceased to be looked after were adopted in the last six months. This adoption rate surpasses the published figures for Calderdale (12%), statistical neighbours (SN) at 10%, and the national average (9%) in 2022/23.

Similarly, young people who transitioned to having a Special Guardianship Order (SGO) in the last six months accounted for 20%. Again, this percentage exceeds the 2022/23 published data for statistical neighbours (12%) and the national average (12%).

Domestic Abuse	Bradford	Calderdale	Kirklees	Leeds	Wakefield	W Yorks
Total incidents 12 mths to Mar 24	18,397	5,926	11,720	23,153	10,820	70,016
Total incidents 12 months to Mar 23	20,346	6,376	12,463	25,960	11,978	77,123
% Difference	-9.6%	-7.1%	-6.0%	-10.8%	-9.7%	-9.2%
% Repeat Victims 12 months to Mar 24	42.6%	42.6%	44.1%	44.9%	47.2%	44.3%
% Repeat Victims 12 months to Mar 23	45.3%	44.1%	46.3%	45.7%	49.3%	46.1%
% Difference	-2.7%	-1.5%	-2.2%	-0.8%	-2.1%	-1.8%



**What is the story the data is telling us?**

Domestic abuse repeat victims is a new Super Key Performance indicator for 2024/25. Domestic abuse incidents have reduced by 7.1% in comparison to the last 12 months to March 2024. The repeat victim rate has also reduced by 1.5% in comparison. Within the West Yorkshire area there was also a reduction in the number of incidents by 9.2% and the repeat victim rate also reduced by 1.8% compared to previous years.

Domestic abuse per 1,000 population in Calderdale was 22.5 compared to Kirklees 21.6; Leeds 22.3; Wakefield 23.7 and Bradford 26.8

Definition of DA is any incident or pattern of incidents of controlling, coercive or threatening behaviour, violence or abuse between those aged 16 or over who are or have been intimate partners or family members, regardless of gender or sexuality. Domestic Abuse repeat victims

**What are we doing to improve?**

Since the new MARAC model went live, there have been more agencies involved in the process and this has resulted in an improvement in the sharing of information and forming safety plans to ensure the safeguarding of vulnerable victims and children in Calderdale.

The DRAMM meeting is now more streamlined, with clear focus and purpose on its aims for the core agencies that attend the daily meeting.

Most referrals to MARAC are still from the Police, but we are starting to see an increase in referrals from other agencies who are now attending MARAC and sharing their knowledge with their colleagues.

The Out of Hours IDVA Service continues to operate. This service is extremely valuable and positive feedback is regularly received from both victims and the Officers who work alongside the IDVA to safeguard vulnerable victims.

**What evidence is there that actions are having an impact?**

Noticeably, the victim repeat rate in Calderdale has decreased by -1.5% there has been a decrease of -1.8% across West Yorkshire. In addition to this Calderdale have the best performing data across the force for Conviction rates and Attrition rates. We are also the only district within West Yorkshire to have met the targets for conviction and attrition rates that are nationally set.

This is evidence of the work being done in the district and the extensive partnership work ensuring that victims are supported and safeguarded to achieve successful prosecutions.

**What more needs to happen?**

Additional investment around perpetrator provision could be considered in addition to continued investment of the remainder of the £466,374 for 23/24 into strengthening the offer of safe accommodation.

Continued oversight of the structured action plan that aligns our five year DA strategy.

Refresh of our local Safe Accommodation Needs Assessment.

**OPF feedback**

The data is telling a positive story with focus and work to tackle domestic abuse with partner agencies and across the system such as the police is having an impact with examples such as more victims engaging with support services and intervention. We will continue to report and give detailed attention as a leadership group to this and its link to other areas such as suicide, safeguarding reviews and public health approaches to violent crime going forward.