

REDUCING INEQUALITIES



13%
increase in takeup
of 2 year old early
education funding



3%
reduction of people
aged **65+** receiving
long term **social care**



Successfully
selected as one of
**12 pilot sites for
major funding**
by Sport England
to increase
physical activity



90%
of primary
schools **good**
to **outstanding**



Over **50%**
reduction in the time
taken from a child
becoming looked after
to being placed with an
adoptive family



63.7%
of adults report doing
150+ minutes of physical
activity a week. Delivery
pilot for Sport England

CALDERDALE PERFORMANCE 2017/18

VISION 2024

ACTIVE
CALDERDALE

Calderdale
Council



1,354
homes and
590 businesses
approved for **flood
resilience grants**



1,500
volunteers
completed projects
at **200** locations

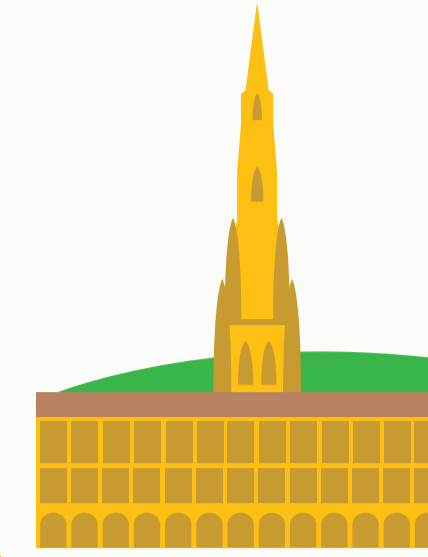
31,000

tonnes of grit
spread on
Calderdale roads
this Winter



A **1/3** less waste
sent to **landfill** in
2017/18 than
previous year

Over **£19 million** in 2017/18
spent on capital projects to
improve transport
and flood
infrastructure
across
Calderdale



The Piece Hall
footfall has
exceeded
1.5 million
in the first **6** months



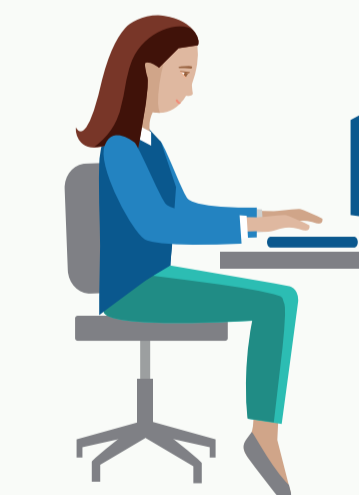
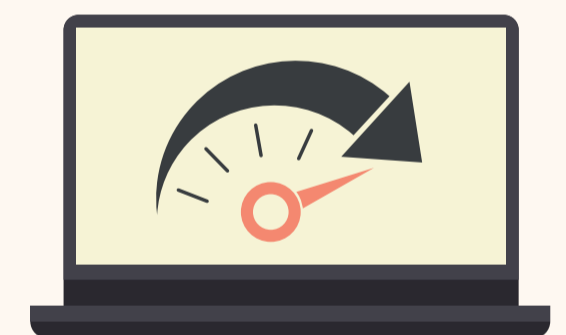
Calder visitor
economy
estimated to be
£328 million
with **6,371** jobs
supported by tourism.



Employment
rate of
76.2%

93.6%

coverage of
**Superfast
Broadband**
(>24 Mbps)



Over **3/4** of adults in
Calderdale have basic
digital skills. Digital
Strategy agreed and
published



28,111
Children's books issued by
Halifax Central Library
compared with **9,773** for
the same period last year.
(Sept 2017 - March 2018)

GROW THE ECONOMY

SUSTAINABLE FUTURE